

# **PCIG Consulting Template**

## **Practice Privacy Notice**

### **SystemOne Practices**

**Version: 3.10**  
**Date: 04/06/2026**

**This template is for use by Practices to Comply with the UKGDPR requirement to display a Privacy Notice regarding processing of patient data. The template is Generic in design as PCIG Consulting have clients across the UK, local sharing arrangements and area specific sharing or processing will need to be added by the practice.**

## What you can expect from your practice.

This guide tells you what to expect from your general practice (GP) and how you can help them, so you get the best from the National Health Service (NHS). More details can be found through the links below.

## When and how can you contact your general practice?

Your general practice is open from **8.00am to 6.30pm, Monday to Friday**.

Throughout these hours you, or your carer on your behalf, can:

- Visit the practice
- Call them
- Go online using the practice's website or the **NHS App**.

You can choose the way you contact your practice based on what is best for you. Some practices may have longer hours or may ask that you contact them via phone or in person for urgent queries.

## What if the practice is closed?

If you need urgent help for your physical or mental health when the general practice is closed, and you cannot wait until they open, go online to [111.nhs.uk](https://111.nhs.uk) or call **111**. They will tell you what to do next.

## What if it's an emergency?

If it's a serious or life-threatening emergency, go straight to **A&E** (Accident and Emergency) or call **999**.

## What happens when you contact your practice to request an appointment?

Whether you make your request by phone, on-line or visiting your practice, you may be asked to give your practice some details so that they can assess what is best for you based on your clinical need. The practice team will consider your request for an appointment or medical advice and tell you **within one working day** what will happen next.

This could be:

- An appointment that day or a subsequent day
- A phone call that day or a subsequent day
- A text message responding to your query
- Advice to go to a pharmacy or another NHS service.

Your practice will decide what is best for you based on your clinical need.

Your practice cannot tell you to just call back the next day.

## Who might help you?

You might be offered a face-to-face appointment or a phone call with a GP or other member of the practice staff, like a nurse or pharmacist.

If you have a carer, they can speak for you with your consent.

You can ask to see a preferred healthcare professional, and the practice will try to meet your request, although you might have to wait longer for that person to be available.

It can be helpful to see the same healthcare professional, particularly if you have a long-term health condition.

## From what age can you see a GP on your own?

If you are **16 or older**, you can make and go to appointments by yourself.

If you are **under 16**, you can still ask to see a GP without your parent or guardian. The GP will decide if that's appropriate for you.

## What if you need extra help?

If you do not speak English, you can ask for interpretation services in your preferred language when you make an appointment.

If you need extra help like longer appointments, a quiet space, wheelchair access, or information in a different format, tell your practice and they will try to help.

## How do you choose a general practice?

You can:

- Call or visit a local practice
- Use [Find a GP online](#).

If you want to change to a new general practice you can do so at any point. Most people have a few choices nearby.

## Do you need ID or proof of address?

**No**, you do not need ID, an NHS number or proof of address. It can help the practice if you do, but it is not needed to register or see a GP. You can also register with a practice if you are homeless.

## Can a practice say no to registering you?

They must write to you within **14 days** if they say no and explain why. A practice can only say no for a good reason, like if you live too far away or their patient list is closed. For example, they **cannot** say no for reasons such as immigration status, not having a permanent address, or for reasons connected with other characteristics protected under equalities legislation.

## Can you choose which hospital or clinic you are referred to?

If your GP needs to refer you for a physical or mental health condition, in most cases you have the right to choose the hospital or service you'd like to go to. You can get further information on your right to choose [on the nhs.uk website](#).

## If you are new to the UK

You can still register with a GP. It's free to use and your **immigration status does not affect your right to register with a GP**.

## If you are away from home but still in the UK

If you are away from home for more than 24 hours (but less than 3 months), you can register as a **temporary patient** near where you're staying.

You can also change your nominated pharmacy so you can get your medicine nearby. You can do this by contacting your practice or via the NHS App.

## Do general practices charge for anything?

NHS GP services are **free**. Sometimes, if you ask the GP to do private work (like writing a letter for insurance), they may charge a fee.

## How should everyone be treated?

The practice should treat everyone fairly, kindly and respectfully. Likewise, you should also treat staff with respect. The practice can remove patients from their list if they are violent or abusive to staff.

To learn more about your rights, you can read the [NHS Constitution](#).

## How can you help your general practice?

1. **Be prepared:** Before an appointment, think about writing down your symptoms, what you are worried about and what you want to talk about.
2. **Be on time:** Being late for an appointment or being unavailable for a timed call-back can affect other patients.
3. **Cancel if needed:** If you can't go to your appointment, tell the practice as soon as you can, so that they can offer it to someone else.
4. **Use the NHS App or website:** If you're confident using smart phones or computers, you can book or cancel appointments, order repeat prescriptions, and see your test results online.
5. **Turn on notifications:** If you use the NHS App, turn on notifications so the practice can contact you more easily. Please keep an eye out for messages.
6. **Order repeat medicines on time:** Make sure you ask for repeat prescriptions on time, so you don't run out, and only order what you need.
7. **Join the Patient Participation Group:** Your practice will have a group of patients who can offer feedback on the services it delivers. Your practice website should explain how you can join.

## How can you give feedback or raise concerns?

If you want to give feedback, raise a concern or wish to make a formal complaint, ask to speak to the practice manager. If you don't feel comfortable doing this, contact your integrated care board (ICB) – the local NHS body that oversees GPs practices. You can find your local integrated care on the [NHS England website](#).

You can also give feedback about your practice to your local Healthwatch. Their job is to make sure NHS leaders and other decision-makers hear your voice and use your feedback to improve care. Healthwatch is independent and impartial, and any information you share with them is confidential. To find your local Healthwatch visit [the Healthwatch website](#).

## **RAPID HEALTH**

**For more information about this service see here:-**

**<https://vimeo.com/948772217/f3e9d87d1b>**

### **NHS login**

If you access Rapid Health using your NHS login details, the identity verification services are managed by NHS England.

NHS England is the controller for any personal information you provided to NHS England to get an NHS login account and verify your identity and uses that personal information solely for that single purpose. For this personal information, our role is a “data processor” only and we must act under the instructions provided by NHS England (as the “data controller”) when verifying your identity.

For more information on NHS login, see the [NHS login privacy notice](#) and [NHS login terms and conditions](#).

### **NHS App**

You can access Rapid Health on the NHS App using your NHS login details. If you sign in using NHS login, we will ask your permission to share your NHS login information with our service. This allows us to fill in some personal details for you, such as your name, date of birth and contact details.

We will not use your NHS login information for any other purposes. You can only share your NHS login information if you have proved your identity to NHS login.

You can choose not to share your NHS login information with Rapid Health but you will need to enter your information yourself whilst using the service.

For more information, see the [NHS login privacy notice](#) and [NHS login terms and conditions](#).



## **Data Protection Privacy Notice for Patients**

### **Introduction:**

This privacy notice lets you know what happens to any personal data that you give to us, or any information that we may collect from you or about you from other organisations.

This privacy notice applies to personal information processed by or on behalf of the practice.

This Notice explains

- Who we are and how we use your information
- Information about our Data Protection Officer
- What kinds of personal information about you we hold and use (process)
- The legal grounds for our processing of your personal information (including when we share it with others)
- What should you do if your personal information changes?
- For how long your personal information is retained / stored by us?
- What are your rights under Data Protection laws

The UK General Data Protection Regulation (UKGDPR) and the Data Protection Act 2018 (DPA 2018) became law on 25th May 2018, and 1<sup>st</sup> January 2021 when the UK exited the EU.

For the purpose of applicable data protection legislation (including but not limited to the General Data Protection Regulation (Regulation (UK) 2016/679) (the "UKGDPR"), and the Data Protection Act 2018 the practice responsible for your personal data is Melbourne & Chellaston Medical Practice.

This Notice describes how we collect, use and process your personal data, and how in doing so, we comply with our legal obligations to you. Your privacy is important to us, and we are committed to protecting and safeguarding your data privacy rights.

### **How we use your information and the law.**

Melbourne & Chellaston Medical Practice will be what's known as the 'Controller' of your personal data.

We collect basic personal data about you and location-based information. This does include name, address and contact details such as email and mobile number etc.

We will also collect sensitive confidential data known as "special category personal data", in the form of health information, religious belief (if required in a healthcare setting) ethnicity and sex life information that are linked to your healthcare, we may also receive this information about you from other health providers or third parties.

## **Why do we need your information?**

The health care professionals who provide you with care maintain records about your health and any treatment or care you have received previously. These records help to provide you with the best possible healthcare and treatment.

NHS health records may be electronic, paper-based or a mixture of both. We use a combination of working practices and technology to ensure that your information is kept confidential and secure.

Records about you may include the following information;

- Details about you, such as your address, your carer or legal representative and emergency contact details.
- Any contact the surgery has had with you, such as appointments, clinic visits, emergency appointments.
- Notes and reports about your health.
- Details about your treatment and care.
- Results of investigations such as laboratory tests, x-rays etc.
- Relevant information from other health professionals, relatives or those who care for you.
- Contact details (including email address, mobile telephone number and home telephone number)

To ensure you receive the best possible care, your records are used to facilitate the care you receive, including contacting you. Information held about you may be used to help protect the health of the public and to help us manage the NHS and the services we provide. Limited information may be used within the GP practice for clinical audit to monitor the quality of the service we provided.

## **How do we lawfully use your data?**

We need your personal, sensitive and confidential data in order to provide you with healthcare services as a General Practice, under the General Data Protection Regulation we will be lawfully using your information in accordance with: -

*Article 6, e) processing is necessary for the performance of a task carried out in the public interest or in the exercise of official authority vested in the controller;"*

*Article 9, (h) processing is necessary for the purposes of preventive or occupational medicine, for the assessment of the working capacity of the employee, medical diagnosis, the provision of health or social care or treatment or the management of health or social care systems*

This Privacy Notice applies to the personal data of our patients and the data you have given us about your carers/family members.

We use your personal and healthcare information in the following ways:

- when we need to speak to or contact other doctors, consultants, nurses, or any other medical/healthcare professional or organisation during your diagnosis or treatment or ongoing healthcare; this includes the use of telephone or video consultation.

- when we are required by law to hand over your information to any other organisation, such as the police, by court order, solicitors, or immigration enforcement.
- In a de-identified form to support planning of health services and to improve health outcomes for our population

We will never pass on your personal information to anyone else who does not need it, or has no right to it, unless you give us consent to do so.

Legal justification for collecting and using your information

The law says we need a legal basis to handle your personal and healthcare information.

**Contract:** We have a contract with NHS England to deliver healthcare services to you. This contract provides that we are under a legal obligation to ensure that we deliver medical and healthcare services to the public.

**Consent:** Sometimes we also rely on the fact that you give us consent to use your personal and healthcare information so that we can take care of your healthcare needs.

Please note that you have the right to withdraw consent at any time if you no longer wish to receive services from us.

**Necessary care:** Providing you with the appropriate healthcare, where necessary. The Law refers to this as 'protecting your vital interests' where you may be in a position not to be able to consent.

**Law:** Sometimes the law obliges us to provide your information to an organisation (see above).

### Special categories

The law states that personal information about your health falls into a special category of information because it is very sensitive. Reasons that may entitle us to use and process your information may be as follows:

**Public Interest:** Where we may need to handle your personal information when it is considered to be in the public interest. For example, when there is an outbreak of a specific disease and we need to contact you for treatment, or we need to pass your information to relevant organisations to ensure you receive advice and/or treatment

**Consent:** When you have given us consent

**Vital Interest:** If you are incapable of giving consent, and we have to use your information to protect your vital interests (e.g. if you have had an accident and you need emergency treatment)

**Defending a claim:** If we need your information to defend a legal claim against us by you, or by another party

**Providing you with medical care:** Where we need your information to provide you with medical and healthcare services

## AccuRX

As part of the Digital First National programme of work, GP Practices are required to provide a tool for patients to access primary care services.

The aim of the Accurx platform is to improve communications between healthcare staff and patients resulting in improved outcomes and productivity. The platform facilitates digital communications between the practice and our patients.

Using the Accurx platform will require the processing of special category data by Accurx, their sub-processors and by default the GP Practice as a Controller. This will include; exchanging and storing messages in relation to patients and medical staff, performing video consultations (these will not be recorded or stored) between healthcare staff and their patients. This will allow you to respond to the Practice in multiple ways such as; free text, questionnaires and submitting images/documents.

If you have a non-urgent healthcare concern or need to contact the Practice for any medical or admin reason, click on the online via our website or [via NHS app](#) or [via NHS website](#). Fill out the online form, which will then be reviewed and processed by our healthcare professionals to decide the right care for you. We will respond to every online request 2 working days.

Accurx is approved by NHS England to be used by GP practices and the other systems involved in patient care. NHS England has a lengthy assurance process to make sure they meet the highest standards of safety and security. Your data is safe and is shared only with your GP Practice for the purposes of your direct care. Your data is stored and sent securely using industry best practices, and Accurx only collect the data that is necessary to allow your GP Practice to provide you with care.

The Practice uses the following Accurx features:

- SMS, Friends and Family test, online consultations, video consultations, AccuMail and Record Views

Accurx's privacy notice can be found on their website here: [Accurx - Privacy Policy](#)

## The National Record Locator (NRL)

The National Record Locator (NRL) is one of a number of services that was set up under the NHS Digital Establishment of Systems: Digital Interoperability Platform (DIP) Directions 2019. The purpose of the DIP was to "develop and operate such IT applications, IT infrastructure and IT systems as are necessary to deliver the digital interoperability platform". The Secretary of State considered (in accordance with Section 254(2)(b) of the Health and Social Care Act 2012), that it was "in the interests of the health service in England or of the recipients or providers of adult social care in England" that these Directions be given. Since NHS Digital has merged with NHS England, all services set up under this Direction are now managed by NHS England.

The NRL is a national index of pointers to the location of Patient Records of patients who live in England and/or who are registered with a GP in England. Providers that hold a relevant Patient Record will create a Pointer to the record, which can then be accessed by Consumers for the Agreed Purpose.

Information permitted to share on the NRL (where the document type exists for the patient) is as follows:

- Care plans\*
- NEWS2 Report – National Early Warning Scores
- Shared Care Record Summary document
- International Patient Summary

\* Care plans:

- mental health crisis plan
- end of life care plan
- emergency health care plan
- treatment escalation plans
- personalised care and support plans
- contingency plans

The Pointer is limited to:

- patient NHS Number
- ODS code for the Holder
- the name of the care setting
- what type of information is held
- A URL to contact details for the Holder (optional)
- A URL to retrieve the information (this is a spine secure proxy for the patient record)
- A location for the record which allows the information to be retrieved via a link or up to date contact details

Access by Consumers is currently view only. Once the Consumer closes the PDF, the Shared Personal Data is no longer accessible to them and if still required must be requested again through the same process.

For queries, please email [nrls@nhs.net](mailto:nrls@nhs.net).

Personal Data is processed by Providers and Consumers under the following lawful bases:

- Article 6(1)(e) - Processing is necessary for the performance of a task carried out in the public interest or in the exercise of official authority vested in the controller;
- Article 6(1)(g) – Reasons of substantial Public Interest (with a basis in law) and with Conditions 11 and 18 under Schedule 1 of the Data Protection Act 2018 and/or;
- Article 9(2)(h) – Health or social care (with a basis in law) - Processing is necessary for the purposes of preventive or occupational medicine, for the assessment of the working capacity of the employee, medical diagnosis, the provision of health or social care or treatment or the management of health or social care systems and services.

The Common Law Duty of Confidence is met because the processing of personal confidential information is for the purpose of Direct Care. Information may be further shared where the disclosure is necessary to safeguard the individual or others, or for another purpose where it is necessary to do so in the public interest.

Processing will continue until a Party withdraws from the Agreement or the Agreement is otherwise terminated by NHS England.

In accordance with clause 6.2, Personal Data must not be retained except for instances where Shared Personal Data has been used to update the Consumer's patient medical record for the purposes of Direct Care.

## **Child Health Information Service**

A CHIS is an NHS commissioned service that is responsible for collating data from various organisations for all children aged 0-19 that are either residents or registered with a GP Practice in a specified area, into a single Child Health Record. The child health record begins from birth of the child and monitors the care processes and screening of the child, such as Newborn Blood Spot or hearing assessments through to the various immunisations (stated within the NHS National Vaccination Schedule). Data is received from with organisations such as Public Health, Health Visitors, School Nursing and Immunisations teams to help with increasing vaccination coverage to prevent outbreaks of disease, supporting the healthy child programme, assisting in the delivery of children's public health services and safeguarding vulnerable children.

The aims of our CHIS services are to:

- Have a Child Health Record for each and every child within our area, regardless of the child is registered at a GP Practice or not
- Obtain all data from the respective care provider(s) for all children for the aspects of care given to each child, for example screening and immunisation
- Provide NHS compliant data sharing arrangements which will allow the appropriate healthcare professionals and parent/guardians to access the child health records
- Eradicate costly paper based data flows with more efficient electronic interfaces to receive the information more quickly

Our CHIS services adhere to the latest NHS England Service Specification and through our innovation and passion to improve the health of children, we meet the aims and objectives of the NHS Child Health Digital Strategy.

The local CHIS service is managed by NHS South, Central and West (SCW).

## **GP Connect System and Data Sharing**

Melbourne & Chellaston Medical Practice has reviewed the National Data Sharing Arrangement (NDSA) for GP connect. GP Connect helps clinicians gain access to GP patient records during interactions away from a patient's registered practice and makes their medical information available to appropriate health and social care professionals when and where they need it, to support the patient's direct care.

From a privacy, confidentiality and data protection perspective, GP Connect provides a method of secure information transfer and reduces the need to use less secure or less efficient methods of transferring information, such as email or telephone.

### **GP Connect - key points.**

- GP Connect can only be used for direct care purposes.
- Individuals can opt out of their GP patient record being shared via GP Connect by contacting their GP practice.

- Access to GP Connect is governed by role-based access control (RBAC) and organisational controls; only people who need to see the GP patient record for a patient's direct care should be able to see it
- All systems that allow the use of GP Connect must undergo a robust compliance process and the organisations involved must sign a connection agreement holding them to high standards of information security.

GP Connect products can help health and social care professionals share, view or act on information that could be required for a patient's direct care, but they would otherwise have difficulty accessing easily (for example if they are using different IT systems).

Organisations can have access to relevant information in GP patient records to provide direct care to patients only.

### **Type of organisations that use GP Connect**

Examples of organisations that may wish to use GP connect to view GP patient records include:

- GP surgeries that patients are not registered at - for example, if they need to see a doctor when they are away from home
- secondary care (hospitals) if they need to attend A&E or are having an operation
- GP hubs/primary care networks (PCNs)/integrated care systems (ICSs), partnerships between healthcare providers and local authorities
- local 'shared care' record systems
- ambulance trusts, so paramedics can view GP patient records in an emergency
- healthcare professionals such as community services
- acute and emergency care service providers
- NHS 111
- pharmacies
- optometrists
- dentistry
- mental health trusts
- hospices
- adult and children's social care
- care and nursing homes

All access to your GP patient record is stored within an audit trail at your GP practice and within the organisation that information has been shared with.

The government and NHS England are determined to improve people's access to, and experience of, GP services. From 1 October 2025 practices will be required to keep their online consultation tool open for the duration of core hours (8am – 6:30pm) for non-urgent appointment requests, medication queries and admin requests.

GP Connect is a service that allows information and the GP Patient Record to be viewed and shared between IT systems. This means authorised clinical staff from different healthcare settings can share and view clinical information held by a GP practice.

The sharing of records is only for the purpose of direct care, and by medical examiners for the statutory purpose of reviewing deaths, where the patient is being treated or consulted in a setting away from their regular GP. GP Connect respects patient consent choices and will not share their data if the patient has asked their GP not to. This will :-

- a. allow read only access to patients' care records (GP Connect Access Record HTML and Structured) by other NHS commissioned providers, for the purposes of direct patient care and read only access for providers of private healthcare (only in cases where the private provider obtains explicit permission from the patient to access their NHS GP care record, and they are providing direct care to the patient).
- b. allows Community Pharmacy registered professionals to send consultation summaries into the GP practice workflow (GP Connect Update Record).

**Patients should contact their GP practice if they want to opt out of their patient GP record being shared via GP Connect**

GP Connect can be used in a variety of **care settings** but can only be used for the purpose of **direct care**, and by medical examiners for the statutory purpose of reviewing deaths, as per NHSE legal directions.

Full details about GP connect can be found here: -

<https://digital.nhs.uk/services/gp-connect/gp-connect-in-your-organisation/transparency-notice>.

### **Confidentiality**

Confidentiality and trust are essential to the relationship between GPs and their patients.

The information a patient provides to their GP is confidential, and they can expect that any information that is shared for their direct care will remain confidential.

GP Connect relies on 'implied consent'.

Explicit consent is not required when information is shared for a direct care purpose. If a patient does not want their information to be shared using GP Connect, they can opt out.

The NDSA and its terms and conditions stipulate that any information received or accessed about a patient for direct care purposes must remain confidential.

In addition to the NDSA, health and social care professionals are also subject to their own professional codes of confidentiality and are aware that any information received via GP Connect is provided in confidence, which must be respected.

Organisations using GP Connect are notified of their duty as 'controllers' to be fair and transparent about their processing of their patients' information and to ensure that their transparency notices are fully updated with how they may be using GP Connect functionality.

NHS England helps support the mitigation of information sharing risks by ensuring that:

- NHS England audit data access is subject to two-factor authentication and role-based access controls - only certain assured users can have access to the full audit logs

- a completed Supplier Conformance Assessment List (SCAL) which covers service and capability specific compliance requirements and controls of the consumer system is in place

It is the responsibility of organisations using GP Connect to ensure that they comply with the NDSA, and their statutory and legal obligations regarding data protection and confidentiality.

### **Opting out of GP Connect**

If patients do not wish their information to be shared using GP Connect, they can opt out by contacting their GP practice.

### **National Data Opt-Out**

The National Data Opt-out is a service that allows patients to opt out of their confidential patient information being used for research and planning.

The National Data Opt-out only applies to any disclosure of data for purposes beyond direct care, so having National Data Opt-out will not prevent your GP patient record being shared via GP Connect.

### **Risk Stratification**

Risk stratification data tools are increasingly being used in the NHS to help determine a person's risk of suffering a condition, preventing an unplanned or (re)admission and identifying a need for preventive intervention. Information about you is collected from several sources including NHS Trusts and from this GP Practice. The identifying parts of your data are removed, analysis of your data is undertaken, and a risk score is then determined. This is then provided back to your GP as data controller in an identifiable form. Risk stratification enables your GP to focus on preventing ill health and not just the treatment of sickness. If necessary, your GP may be able to offer you additional services. Please note that you have the right to opt out of your data being used in this way in most circumstances, please contact the practice for further information about opt out.

Individual Risk Management at a GP practice level however is deemed to be part of your individual healthcare and is covered by our legal powers above.

### **Transferring the current paper medical records into patients' electronic medical records.**

The following provisions of the General Data Protection Regulation permit us to digitise existing paper medical records:

Article 6(1)(e) – 'processing is necessary...in the exercise of official authority vested in the controller...'

Article 9(2)(h) – 'processing is necessary for the purpose of preventative...medicine...the provision of health or social care or treatment or the management of health or social care systems and services...'

The paper patient records will be shared with [Scanning provider], who will scan and digitise the current paper medical records before destroying them. The paper patient records will be

shared with the scanning provider above, who will scan and digitise the current paper medical records before destroying them.

### **Data Shared with NHSE**

NHSE may request and be provided with information from our telephone system for national requirements, investigations or audits. NHSE may request and be provided with information from our online consultation system for national requirements, investigations or audits.

### **Anonymised information**

Sometimes we may provide information about you in an anonymised form. Such information is used to analyse population-level health issues, and helps the NHS to plan better services. If we share information for these purposes, then none of the information will identify you as an individual and cannot be traced back to you.

### **Medicines Management**

The Practice may conduct Medicines Management Reviews of medications prescribed to its patients. This service performs a review of prescribed medications to ensure patients receive the most appropriate, up to date and cost-effective treatments. The reviews are carried out by the ICBs Medicines Management Team under a Data Processing contract with the Practice.

### **Research - National Institute for Health & Social Care Research (NIHR) - Clinical Research Network**

Clinical Research Network West Midlands (CRN WM) provides a research delivery service to GP practices across the West Midlands. All CRN WM Delivery Support staff are employed by The Royal Wolverhampton NHS Trust. All NHS Staff members who have been allocated to work within the Practice will be issued with a Letter of access or assurance to confirm individual study placements and pre-employment checks.

### **The legal bases for processing this information**

CRN WM processes data under the instruction of the individual research protocol, as delegated by the practice (data controller). You can opt out of being invited to participate in research at any time, please inform a member of the practice team and we will add the appropriate opt out code to your record.

Prior to informed consent:

The legal basis which allows us to process your personal data for research is GDPR article 6 (1)(f) ...legitimate interests...except where such interests are overridden by the interests or fundamental rights and freedoms of the data subject...'

Once informed consent has been given:

The legal basis which allows us to process your personal data is informed consent - Article 6 1(a) the data subject has given consent to the processing of his or her personal data for one or more specific purposes; and Article 9 (2) (a) the data subject has given explicit consent to the processing those personal data for one or more specified purposes.

Individual study consent forms will detail how to withdraw consent and who to contact, this will usually be via the study sponsor.

## Categories of personal data

The data processed by CRN WM delivery staff, in addition to demographic and contact details, is likely to be special category information (such as health information) to determine eligibility for individual research studies.

## Recipients of data

The data processed by CRN WM delivery staff will be used to invite potentially eligible patients into research studies. Once patients have consented to participate, data processed by the CRN WM delivery staff will be used to answer the research questions as outlined in individual research protocols.

For further information, please refer to the Clinical Research Network West Midlands Privacy Notice: <https://local.nihr.ac.uk/documents/crn-wm-privacy-notice-march-2021/27187>

## Summary Care Records

All patients registered with a GP have a Summary Care Record, unless they have chosen not to have one. The information held in your Summary Care Record gives registered and regulated healthcare professionals, away from your usual GP practice, access to information to provide you with safer care, reduce the risk of prescribing errors and improve your patient experience.

Your Summary Care Record contains basic (Core) information about allergies and medications and any reactions that you have had to medication in the past.

Some patients, including many with long term health conditions, previously have agreed to have Additional Information shared as part of their Summary Care Record. This Additional Information includes information about significant medical history (past and present), reasons for medications, care plan information and immunisations.

## Change to information held in your Summary Care Record

In light of the current emergency, the Department of Health and Social Care has removed the requirement for a patient's prior explicit consent to share Additional Information as part of the Summary Care Record.

This is because the Secretary of State for Health and Social Care has issued a legal notice to healthcare bodies requiring them to share confidential patient information with other healthcare bodies where this is required to diagnose, control and prevent the spread of the virus and manage the pandemic. This includes sharing Additional Information through Summary Care Records, unless a patient objects to this.

If you have already expressed a preference to only have Core information shared in your Summary Care Record, or to opt-out completely of having a Summary Care Record, these preferences will continue to be respected and this change will not apply to you. For everyone else, the Summary Care Record will be updated to include the Additional Information. This change of requirement will be reviewed after the current coronavirus (COVID-19) pandemic.

## Why we have made this change

In order to look after your health and care needs, health and social care bodies may share your confidential patient information contained in your Summary Care Record with clinical and

non-clinical staff in other health and care organisations, for example hospitals, NHS 111 and out of hours organisations. These changes will improve the healthcare that you receive away from your usual GP practice.

## Your rights in relation to your Summary Care Record

Regardless of your past decisions about your Summary Care Record preferences, you will still have the same options that you currently have in place to opt out of having a Summary Care Record, including the opportunity to opt-back in to having a Summary Care Record or opt back in to allow sharing of Additional Information.

You can exercise these rights by doing the following:

1. **Choose to have a Summary Care Record with all information shared.** This means that any authorised, registered and regulated health and care professionals will be able to see a detailed Summary Care Record, including Core and Additional Information, if they need to provide you with direct care.
2. **Choose to have a Summary Care Record with Core information only.** This means that any authorised, registered and regulated health and care professionals will be able to see limited information about allergies and medications in your Summary Care Record if they need to provide you with direct care.
3. **Choose to opt-out of having a Summary Care Record altogether.** This means that you do not want any information shared with other authorised, registered and regulated health and care professionals involved in your direct care. You will not be able to change this preference at the time if you require direct care away from your GP practice. This means that no authorised, registered and regulated health and care professionals will be able to see information held in your GP records if they need to provide you with direct care, including in an emergency.

To make these changes, you should inform your GP practice or complete this [form](#) and return it to your GP practice.

## Patient Communication

Because we are obliged to protect any confidential information, we hold about you and we take this very seriously, it is imperative that you let us know immediately if you change any of your contact details.

We may contact you using SMS texting to your mobile phone if we need to notify you about appointments and other services that we provide to you involving your direct care, therefore you must ensure that we have your up-to-date details. This is to ensure we are sure we are contacting you and not another person. As this is operated on an 'opt out' basis we will assume that you give us permission to contact you via SMS if you have provided us with your mobile telephone number. Please let us know if you wish to opt out of this SMS service. We may also contact you using the email address you have provided to us. Please ensure that we have your up-to-date details.

There may be occasions where authorised research facilities would like you to take part in research. Your contact details may be used to invite you to receive further information about such research opportunities.

## The NHS App

We use the NHS Account Messaging Service provided by NHS England to send you messages relating to your health and care. You need to be an NHS App user to receive these messages. Further information about the service can be found at the [\*\*privacy notice for the NHS App\*\*](#) managed by NHS England.

## Safeguarding

The Practice is dedicated to ensuring that the principles and duties of safeguarding adults and children are holistically, consistently and conscientiously applied with the wellbeing of all, at the heart of what we do.

Our legal basis for processing For the General Data Protection Regulation (GDPR) purposes is: -

*Article 6(1)(e) ‘...exercise of official authority...’.*

For the processing of special categories data, the basis is: -

*Article 9(2)(b) – ‘processing is necessary for the purposes of carrying out the obligations and exercising specific rights of the controller or of the data subject in the field of employment and social security and social protection law...’*

## Child protection information sharing system

The Child Protection - Information Sharing (CP-IS) service is a national system (across England) that securely links health and social care records to help protect children who:

- **Are looked after by local authorities.**
- **Are subject to a child protection plan (including unborn child protection plans).**
- **Have been in either category within the previous 12 months**

It enables health professionals to access key safeguarding information when a child presents at a healthcare setting, especially when they are outside their home local authority area.

In England, since 2014, the Child Protection Information Sharing System (CP-IS) has been sharing information between Local Authorities (LAs), unscheduled settings, and ambulance services about unborn babies & children who have a child protection plan and children who are looked after. This information sharing is intended to enable frontline staff who are working with children at risk of abuse or neglect to make well-informed assessments, identify emerging problems, and streamline interagency working to support the children and their families when and where they need it.

CP-IS is currently used across the following unscheduled healthcare settings:

- **Emergency Departments (NHS Trusts)**
- **Minor Injury Units (NHS Trusts)**
- **Walk in Centres (CCGs/Primary Care)**
- **Urgent Care Centres/Urgent Treatment Centres**
- **GP Out of Hours only**

The information CP-IS provides comes from and is managed and updated by Local Authorities (Councils) across England with the use of the child's or mother's NHS number. It does not include information from health or educational systems such as GP practices, schools, or

health visitors (HVs), who continue to use Summary Care Records (SCRs) or the Primary Care Records to access health information.

As part of the NHS Long-Term Plan, it is now a target to make CP-IS available NHS-wide in England. So, the GP **in hours** service via the National Care Records Service, CP-IS data will be available and used 2 by December 2025.

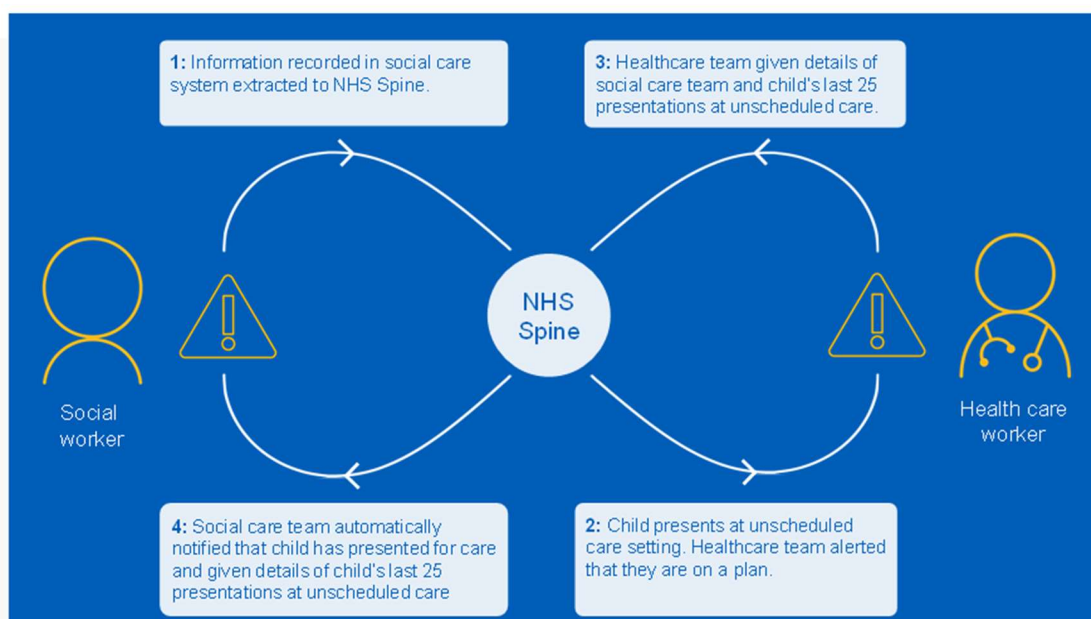
This is to support decision-making processes undertaken by front-line NHS health practitioners, CP-IS will provide a limited amount of child protection indicator information (NHS Number, Type, start and end date of any child protection plan a child is on, name and contact details of the responsible LA, and an access history [including date and time] of the previous twenty-five visits to unscheduled care setting) about children at risk of abuse or neglect.

CP-IS does **NOT SHARE**:

- The child's full social care file.
- The category of the CPP.
- Details of the child's parents or carers.
- The reason the child has previously presented for care.
- Medical information.

While CP-IS will only be accessible to practitioners with the correct permissions, all our staff are responsible for ensuring they are aware of and understand this process.

### How does CP-IS work



### Benefits of CP-IS

- **Early Intervention – Acting to prevent and or reduce future harm happening to children** - With instant access to CP-IS information, communication with the appropriate Social Worker can occur quickly, leading to a better outcome for the child.
- Because the Social Worker is notified immediately if a child in their care has presented at an unscheduled care setting, they are better placed to assess whether any intervention is needed to achieve a good outcome for the child.

- **Improved safety and care – Doing the best when children need help** - Because health practitioners (in unscheduled and now scheduled care settings) can see CP-IS information about a child anywhere in England, they will be better equipped to make the right decision about that child's care.
- **Increased workforce efficiency and effectiveness – Doing the most for children with the resources we have** - Because CP-IS automatically sends information to the NHS Spine daily, it is always up to date.

## Research

Clinical Practice Research Datalink (CPRD) collects de-identified patient data from a network of GP practices across the UK. Primary care data are linked to a range of other health related data to provide a longitudinal, representative UK population health dataset. You can opt out of your information being used for research purposes at any time (see below), full details can be found here: -

<https://cprd.com/transparency-information>

## The legal bases for processing this information

CPRD do not hold or process personal data on patients; however, NHS Digital (formally the Health and Social Care Centre) may process 'personal data' for us as an accredited 'safe haven' or 'trusted third-party' within the NHS when linking GP data with data from other sources. The legal bases for processing this data are:

- Medicines and medical device monitoring: Article 6(e) and Article 9(2)(i) - public interest in the area of public health
- Medical research and statistics: Article 6(e) and Article 9(2)(j) - public interest and scientific research purposes

Any data CPRD hold or pass on to bona fide researchers, except for clinical research studies, will have been anonymised in accordance with the Information Commissioner's Office Anonymisation Code of Practice. We will hold data indefinitely for the benefit of future research, but studies will normally only hold the data we release to them for twelve months.

## Categories of personal data

The data collected by Practice staff in the event of a safeguarding situation will be as much personal information as is possible that is necessary to obtain in order to handle the situation. In addition to some basic demographic and contact details, we will also process details of what the safeguarding concern is. This is likely to be special category information (such as health information).

## Sources of the data

The Practice will either receive or collect information when someone contacts the organisation with safeguarding concerns, or we believe there may be safeguarding concerns and make enquiries to relevant providers.

## Recipients of personal data

The information is used by the Practice when handling a safeguarding incident or concern. We may share information accordingly to ensure duty of care and investigation as required

with other partners such as local authorities, the police or healthcare professionals (i.e. their GP or mental health team).

## **National Obesity Audit (NOA)**

### **Background:**

More than one in four adults are currently living with obesity. We know obesity puts people at greater risk of many serious diseases and increases their chances of associated comorbidities e.g., cancers, cardiovascular disease, type 2 diabetes.

### **What is the National Obesity Audit?**

NHS England has established a National Obesity Audit (NOA) to bring together comparable data from the different types of weight management services across England. For the NOA to be successful, linking to primary care patient-level data is a critical part of the project to enable analysis of longitudinal weight change, to inform improvement aims.

### **How will the NOA benefit patients?**

By linking to GP patient-level data with weight management service data, the NOA will provide information across the weight management pathway to support quality improvements to patient care. For example, equity of access, improving outcomes of weight management services, reducing obesity-related comorbidities, and improving population health.

### **What information is collected?**

The NOA data collection includes both personal data and special categories of personal data relating to patients living with overweight or obesity, including:

- Demographic information – such as NHS number, date of birth, postcode, sex and ethnicity
- Health information – such as Body Mass Index (BMI), obesity-related co-morbidities, healthcare interventions such as weight loss advice and bariatric surgery.

More information on the data used for the purposes of the NOA is available in the [NOA dataset specification](#)

### **How the NOA will use your data**

NOA data will be used for the purposes of informing policy and guidelines for managing obesity across the NHS and local authorities. It will also be used for benchmarking and to enable NHS providers to maximise the use of their resources and to improve patient outcomes.

NHS England will analyse the data held in the NOA to carry out data quality checks, to pseudonymise the data (de-identify) and to derive values, for example turn date of birth into age.

Data in the NOA may also be linked to other data that NHS England holds, including the Hospital Episode Statistics (HES), Cardiovascular Disease Prevention Audit (CVD Prevent) and the Community Services Data Set (CSDS).

NOA data is used to create regular statistical publications on the NHS England website including dashboards and an annual report. All data published is anonymous and aggregate so that patients cannot be identified from the data.

The data collected for the NOA from the CVD Prevent Audit will not be used for performance management of GPs.

## **NOA legal basis**

Data protection law requires NHS England to have a legal basis before we can use your personal data.

Our legal basis is:

### **Legal obligation**

Article 6(1)(c) of UK GDPR. This is because the Secretary of State for Health and Social Care has issued NHS England with a Direction to analyse this data for NOA purposes. This Direction is called the National Obesity Audit Directions 2023

We also need an additional legal basis in the UK GDPR and the Data Protection Act 2018 (DPA 2018) to use data which is extra sensitive. This is known as 'special categories of personal data'. Our legal basis to use data relating to your health and ethnicity is:

### **Substantial public interest**

Article 9(2)(g) of UK GDPR, plus Schedule 1, Part 2, Paragraph 6 "statutory etc and government purposes" of DPA 2018

### **Health or social care**

Article 9(2)(h) of UK GDPR, plus Schedule 1, Part 1, Paragraph 2 "Health or social care purposes" of DPA 2018.

## **The NOA and NHSE will share this data with**

We treat the data we hold with great care. All data which is shared by NHS England is subject to robust rules relating to privacy, security and confidentiality and only the minimum amount of data necessary to achieve the relevant health and social care purpose will ever be shared.

Data is shared or is expected to be shared with organisations such as healthcare providers, clinicians, and commissioners of NHS services, for example:

- **the organisation that provided your care:** to assess the effectiveness of your care and to improve the services they offer
- **The Department of Health and Social Care:** to inform policy and guidelines
- **organisations responsible for the commissioning of NHS services in England, such as Integrated Care Boards:** to plan and improve weight management services and for benchmarking
- **local authorities:** to help plan and improve weight management services
- **research organisations, including universities and charities:** to carry out research

These organisations must apply for access to NOA data through NHS England's [Data Access Request Service](#). Each application is assessed very carefully to make sure that the organisation:

- has a legal basis to access the data for that purpose
- will use the data for the benefit of health and care and for the agreed purposes only
- will handle and store the data securely

We only share data which can identify you (identifiable data) if this is absolutely necessary and the organisation who has made an application for data cannot achieve their purpose without it. Where possible we remove information from the data which identifies you, or we replace it with a unique reference number (this is known as pseudonymisation).

Each organisation we share data with must sign a [Data Sharing Framework Contract](#) and a [Data Sharing Agreement](#) and we carry out [audits](#) to check they are using the data as agreed.

Details about the NOA data we have shared with other organisations, except for anonymous data, will be published in the [NHS England Data Uses Register](#).

### **Practice Third party processors**

In order to deliver the best possible service, the practice will share data (where required) with other NHS bodies such as other GP practices and hospitals. In addition, the practice will use carefully selected third party service providers. When we use a third party service provider to process data on our behalf then we will always have an appropriate agreement in place to ensure that they keep the data secure, that they do not use or share information other than in accordance with our instructions and that they are operating appropriately.

Examples of functions that may be carried out by third parties include:

- Companies that provide IT services & support, including our core clinical systems; systems which manage patient facing services (such as our website and service accessible through the same); data hosting service providers; systems which facilitate appointment bookings or electronic prescription services; document management services etc.
- Delivery services (for example if we were to arrange for delivery of any medicines to you).
- Payment providers (if for example you were paying for a prescription or a service such as travel vaccinations).

Further details regarding specific third-party processors can be supplied on request to the Data Protection Officer as below.

### **How do we maintain the confidentiality of your records?**

We are committed to protecting your privacy and will only use information collected lawfully in accordance with:

- Data Protection Act 2018
- The General Data Protection Regulations 2016
- Human Rights Act 1998
- Common Law Duty of Confidentiality
- Health and Social Care Act 2012
- NHS Codes of Confidentiality, Information Security and Records Management
- Information: To Share or Not to Share Review

Every member of staff who works for an NHS organisation has a legal obligation to keep information about you confidential.

We will only ever use or pass on information about you if others involved in your care have a genuine need for it. We will not disclose your information to any third party without your permission unless there are exceptional circumstances (i.e. life or death situations), where the law requires information to be passed on and / or in accordance with the information sharing principle following Dame Fiona Caldicott's information sharing review (Information to share or not to share) where "The duty to share information can be as important as the duty to protect patient confidentiality." This means that health and social care professionals should have the confidence to share information in the best interests of their patients within the framework set out by the Caldicott principles.

Our practice policy is to respect the privacy of our patients, their families and our staff and to maintain compliance with the General Data Protection Regulation (GDPR) and all UK specific Data Protection Requirements. Our policy is to ensure all personal data related to our patients will be protected.

All employees and sub-contractors engaged by our practice are asked to sign a confidentiality agreement. The practice will, if required, sign a separate confidentiality agreement if the client deems it necessary. If a sub-contractor acts as a data processor for Melbourne & Chellaston Medical Practice an appropriate contract (art 24-28) will be established for the processing of your information.

In certain circumstances you may have the right to withdraw your consent to the processing of data. Please contact the Data Protection Officer in writing if you wish to withdraw your consent. In some circumstances we may need to store your data after your consent has been withdrawn to comply with a legislative requirement.

Some of this information will be held centrally and used for statistical purposes. Where we do this, we take strict measures to ensure that individual patients cannot be identified. Sometimes your information may be requested to be used for research purposes – the surgery will always gain your consent before releasing the information for this purpose in an identifiable format. In some circumstances you can Opt-out of the surgery sharing any of your information for research purposes.

### **With your consent we would also like to use your information**

There are times that we may want to use your information to contact you or offer you services, not directly about your healthcare, in these instances we will always gain your consent to contact you. We would however like to use your name, contact details and email address to inform you of other services that may benefit you. We will only do this with your consent. There may be occasions where authorised research facilities would like you to take part on innovations, research, improving services or identifying trends, you will be asked to opt into such programmes if you are happy to do so.

At any stage where we would like to use your data for anything other than the specified purposes and where there is no lawful requirement for us to share or process your data, we will ensure that you have the ability to consent and opt out prior to any data processing taking place.

This information is not shared with third parties or used for any marketing and you can unsubscribe at any time via phone, email or by informing the practice DPO as below.

## **National Opt-Out Facility**

***You can choose whether your confidential patient information is used for research and planning.***

### ***Who can use your confidential patient information for research and planning?***

*It is used by the NHS, local authorities, university and hospital researchers, medical colleges and pharmaceutical companies researching new treatments.*

### ***Making your data opt-out choice***

*You can choose to opt out of sharing your confidential patient information for research and planning. There may still be times when your confidential patient information is used: for example, during an epidemic where there might be a risk to you or to other people's health. You can also still consent to take part in a specific research project.*

### ***Will choosing this opt-out affect your care and treatment?***

*No, your confidential patient information will still be used for your individual care. Choosing to opt out will not affect your care and treatment. You will still be invited for screening services, such as screenings for bowel cancer.*

### ***What should you do next?***

*You do not need to do anything if you are happy about how your confidential patient information is used.*

*If you do not want your confidential patient information to be used for research and planning, you can choose to opt out securely online or through a telephone service.*

***You can change your choice at any time. To find out more or to make your choice visit [nhs.uk/your-nhs-data-matters](https://nhs.uk/your-nhs-data-matters) or call 0300 303 5678***

## **NHS Digital Data Collection from the Practice**

The NHS needs data about the patients it treats to plan and deliver its services and to ensure that care and treatment provided is safe and effective. The General Practice Data for Planning and Research data collection will help the NHS to improve health and care services for everyone by collecting patient data that can be used to do this. For example patient data can help the NHS to:

- monitor the long-term safety and effectiveness of care
- plan how to deliver better health and care services
- prevent the spread of infectious diseases
- identify new treatments and medicines through health research

GP practices already share patient data for these purposes, but this new data collection will be more efficient and effective.

This means that GPs can get on with looking after their patients, and NHS Digital can provide controlled access to patient data to the NHS and other organisations who need to use it, to improve health and care for everyone.

Contributing to research projects will benefit us all as better and safer treatments are introduced more quickly and effectively without compromising your privacy and confidentiality.

NHS Digital has engaged with the [British Medical Association \(BMA\)](#), [Royal College of GPs \(RCGP\)](#) and the [National Data Guardian \(NDG\)](#) to ensure relevant safeguards are in place for patients and GP practices.

### **NHS Digital purposes for processing patient data**

Patient data from GP medical records kept by GP practices in England is used every day to improve health, care and services through planning and research, helping to find better treatments and improve patient care. The NHS is introducing an improved way to share this information - called the General Practice Data for Planning and Research data collection.

NHS Digital will collect, analyse, publish and share this patient data to improve health and care services for everyone. This includes:

- informing and developing health and social care policy
- planning and commissioning health and care services
- taking steps to protect public health (including managing and monitoring the coronavirus pandemic)
- in exceptional circumstances, providing you with individual care
- enabling healthcare and scientific research

Any data that NHS Digital collects will only be used for health and care purposes. It is never shared with marketing or insurance companies.

## What patient data NHS Digital collect

Patient data will be collected from GP medical records about:

- any living patient registered at a GP practice in England when the collection started - this includes children and adults
- any patient who died after the data collection started, and was previously registered at a GP practice in England when the data collection started

While 1 September has been seen by some as a cut-off date for opt-out, after which data extraction would begin, Government has stated this will not be the case and **data extraction will not commence until NHS Digital have met the tests.**

The NHS is introducing three changes to the opt-out system which mean that **patients will be able to change their opt-out status at any time:**

- **Patients do not need to register a Type 1 opt-out by 1 September** to ensure their GP data will not be uploaded
- NHS Digital will create the technical means to allow **GP data that has previously been uploaded to the system via the GDPR collection to be deleted when someone registers a Type 1 opt-out**
- **The plan to retire Type 1 opt-outs** will be deferred for at least 12 months while we get the new arrangements up and running, and will not be implemented without consultation with the RCGP, the BMA and the National Data Guardian

We will not collect your name or where you live. Any other data that could directly identify you, for example NHS number, General Practice Local Patient Number, full postcode and date of birth, is replaced with unique codes which are produced by de-identification software before the data is shared with NHS Digital.

This process is called pseudonymisation and means that no one will be able to directly identify you in the data. The diagram below helps to explain what this means. Using the terms in the diagram, the data we collect would be described as de-personalised.

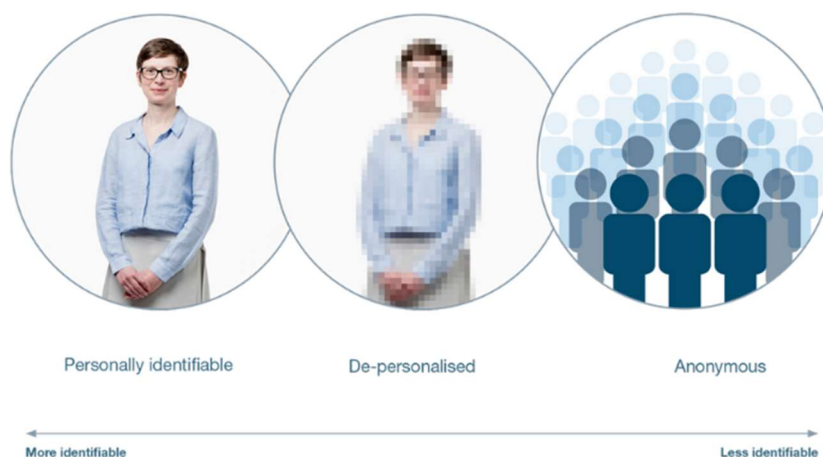


Image provided by Understanding Patient Data [under licence](#).

NHS Digital will be able to use the same software to convert the unique codes back to data that could directly identify you in certain circumstances, and where there is a valid legal

reason. Only NHS Digital has the ability to do this. This would mean that the data became personally identifiable data in the diagram above. An example would be where you consent to your identifiable data being shared with a research project or clinical trial in which you are participating, as they need to know the data is about you.

More information about when we may be able to re-identify the data is in the [who we share your patient data with](#) section below.

The NHS Digital programme will be providing further information as the programme progresses. In the meantime, if you have any questions, you can contact the programme at [enquiries@nhsdigital.nhs.uk](mailto:enquiries@nhsdigital.nhs.uk).

The NHS Digital web pages also provide further information at <https://digital.nhs.uk/data-and-information/data-collections-and-data-sets/data-collections/general-practice-data-for-planning-and-research#additional-information-for-gp-practices>.

### **The Data NHD Digital collect**

We will only collect structured and coded data from patient medical records that is needed for specific health and social care purposes explained above.

Data that directly identifies you as an individual patient, including your NHS number, General Practice Local Patient Number, full postcode, date of birth and if relevant date of death, is replaced with unique codes produced by de-identification software before it is sent to NHS Digital. This means that no one will be able to directly identify you in the data.

NHS Digital will be able to use the software to convert the unique codes back to data that could directly identify you in certain circumstances, and where there is a valid legal reason. This would mean that the data became personally identifiable in the diagram above. It will still be held securely and protected, including when it is shared by NHS Digital.

### **NHS Digital will collect**

- data on your sex, ethnicity and sexual orientation
- clinical codes and data about diagnoses, symptoms, observations, test results, medications, allergies, immunisations, referrals and recalls, and appointments, including information about your physical, mental and sexual health
- data about staff who have treated you

More detailed information about the patient data we collect is contained in the [Data Provision Notice issued to GP practices](#).

### **NHS Digital Does not collect.**

- your name and address (except for your postcode in unique coded form)
- written notes (free text), such as the details of conversations with doctors and nurses
- images, letters and documents
- coded data that is not needed due to its age – for example medication, referral and appointment data that is over 10 years old
- coded data that GPs are not permitted to share by law – for example certain codes about IVF treatment, and certain information about gender re-assignment

## **Opting out of NHS Digital collecting your data (Type 1 Opt-out)**

If you do not want your identifiable patient data (personally identifiable data in the diagram above) to be shared outside of your GP practice for purposes except for your own care, you can register an opt-out with your GP practice. This is known as a Type 1 Opt-out.

Type 1 Opt-outs were introduced in 2013 for data sharing from GP practices, but may be discontinued in the future as a new opt-out has since been introduced to cover the broader health and care system, called the National Data Opt-out. If this happens people who have registered a Type 1 Opt-out will be informed. More about National Data Opt-outs is in the section Who we share patient data with.

NHS Digital will not collect any patient data for patients who have already registered a Type 1 Opt-out in line with current policy. If this changes patients who have registered a Type 1 Opt-out will be informed.

If you do not want your patient data shared with NHS Digital, you can register a Type 1 Opt-out with your GP practice. You can register a Type 1 Opt-out at any time. You can also change your mind at any time and withdraw a Type 1 Opt-out.

Data sharing with NHS Digital will start on 1 September 2021.

If you have already registered a Type 1 Opt-out with your GP practice your data will not be shared with NHS Digital.

If you wish to register a Type 1 Opt-out with your GP practice before data sharing starts with NHS Digital, this should be done by returning this form to your GP practice. If you have previously registered a Type 1 Opt-out and you would like to withdraw this, you can also use the form to do this. You can send the form by post or email to your GP practice or call 0300 3035678 for a form to be sent out to you.

If you register a Type 1 Opt-out after your patient data has already been shared with NHS Digital, no more of your data will be shared with NHS Digital. NHS Digital will however still hold the patient data which was shared with us before you registered the Type 1 Opt-out.

If you do not want NHS Digital to share your identifiable patient data (personally identifiable data in the diagram above) with anyone else for purposes beyond your own care, then you can also register a National Data Opt-out. There is more about National Data Opt-outs and when they apply in the National Data Opt-out section below.

## **NHS Digital legal basis for collecting, analysing and sharing patient data.**

When we collect, analyse, publish and share patient data, there are strict laws in place that we must follow. Under the UK General Data Protection Regulation (GDPR), this includes explaining to you what legal provisions apply under GDPR that allows us to process patient data. The GDPR protects everyone's data.

NHS Digital has been directed by the Secretary of State for Health and Social Care under the General Practice Data for Planning and Research Directions 2021 to collect and analyse data from GP practices for health and social care purposes including policy, planning, commissioning, public health and research purposes.

NHS Digital is the controller of the patient data collected and analysed under the GDPR jointly with the Secretary of State for Health and Social Care.

All GP practices in England are legally required to share data with NHS Digital for this purpose under the Health and Social Care Act 2012 (2012 Act). More information about this requirement is contained in the [Data Provision Notice](#) issued by NHS Digital to GP practices.

NHS Digital has various powers to publish anonymous statistical data and to share patient data under sections 260 and 261 of the 2012 Act. It also has powers to share data under other Acts, for example the Statistics and Registration Service Act 2007.

Regulation 3 of the Health Service (Control of Patient Information) Regulations 2002 (COPI) also allow confidential patient information to be used and shared appropriately and lawfully in a public health emergency. The Secretary of State has issued legal notices under COPI (COPI Notices) requiring NHS Digital, NHS England and Improvement, arm's-length bodies (such as Public Health England), local authorities, NHS trusts, Integrated Care Boards and GP practices to share confidential patient information to respond to the COVID-19 outbreak. Any information used or shared during the COVID-19 outbreak will be limited to the period of the outbreak unless there is another legal basis to use confidential patient information.

## The legal basis under UKGDPR for General Practice Data for Planning and Research

### How NHS Digital use patient data

NHS Digital will analyse and link the patient data we collect with other patient data we hold to create national data sets and for data quality purposes.

NHS Digital will be able to use the de-identification software to convert the unique codes back to data that could directly identify you in certain circumstances for these purposes, where this is necessary and where there is a valid legal reason. There are strict internal approvals which need to be in place before we can do this and this will be subject to independent scrutiny and oversight by the [Independent Group Advising on the Release of Data \(IGARD\)](#).

These national data sets are analysed and used by NHS Digital to produce national statistics and management information, including public dashboards about health and social care which are published. We never publish any patient data that could identify you. All data we publish is anonymous statistical data.

For more information about data we publish see [Data and Information](#) and [Data Dashboards](#).

We may also carry out analysis on national data sets for data quality purposes and to support the work of others for the purposes set out in [Our purposes for processing patient data](#) section above.

### Who NHS Digital share patient data with

All data which is shared by NHS Digital is subject to robust rules relating to privacy, security and confidentiality and only the minimum amount of data necessary to achieve the relevant health and social care purpose will be shared.

All requests to access patient data from this collection, other than anonymous aggregate statistical data, will be assessed by NHS Digital's [Data Access Request Service](#), to make sure that organisations have a legal basis to use the data and that it will be used safely, securely and appropriately.

These requests for access to patient data will also be subject to independent scrutiny and oversight by the [Independent Group Advising on the Release of Data \(IGARD\)](#).

Organisations approved to use this data will be required to enter into a data sharing agreement with NHS Digital regulating the use of the data.

There are a number of organisations who are likely to need access to different elements of patient data from the General Practice Data for Planning and Research collection. These include but may not be limited to:

- the Department of Health and Social Care and its executive agencies, including Public Health England and other government departments
- NHS England and NHS Improvement
- primary care networks (PCNs), Integrated Care Boards (ICBs) and integrated care organisations (ICOs)
- local authorities
- research organisations, including universities, charities, clinical research organisations that run clinical trials and pharmaceutical companies

If the request is approved, the data will either be made available within a secure data access environment within NHS Digital infrastructure, or where the needs of the recipient cannot be met this way, as a direct dissemination of data. We plan to reduce the amount of data being processed outside central, secure data environments and increase the data we make available to be accessed via our secure data access environment. For more information read about improved data access in [improving our data processing services](#).

Data will always be shared in the uniquely coded form (de-personalised data in the diagram above) unless in the circumstances of any specific request it is necessary for it to be provided in an identifiable form (personally identifiable data in the diagram above). For example, when express patient consent has been given to a researcher to link patient data from the General Practice for Planning and Research collection to data the researcher has already obtained from the patient.

It is therefore possible for NHS Digital to convert the unique codes back to data that could directly identify you in certain circumstances, and where there is a valid legal reason which permits this without breaching the common law duty of confidentiality. This would include:

- where the data was needed by a health professional for your own care and treatment
- where you have expressly consented to this, for example to participate in a clinical trial
- where there is a legal obligation, for example where the COPI Notices apply - see [Our legal basis for collecting, analysing and sharing patient data](#) above for more information on this
- where approval has been provided by the [Health Research Authority](#) or the Secretary of State with support from the [Confidentiality Advisory Group \(CAG\)](#) under Regulation 5 of the Health Service (Control of Patient Information) Regulations 2002 (COPI) - this is sometimes known as a 'section 251 approval'

This would mean that the data was personally identifiable in the diagram above. Re-identification of the data would only take place following approval of the specific request through the Data Access Request Service, and subject to independent assurance by IGARD and consultation with the Professional Advisory Group, which is made up of representatives from the BMA and the RCGP. If you have registered a National Data Opt-out, this would be applied in accordance with the National Data Opt-out policy before any identifiable patient data (personally identifiable data in the diagram above) about you was shared. More about the National Data Opt-out is in the section below.

Details of who we have shared data with, in what form and for what purposes are published on our [data release register](#).

## **Where NHS digital stores patient data**

NHS Digital only stores and processes patient data for this data collection within the United Kingdom (UK).

Fully anonymous data (that does not allow you to be directly or indirectly identified), for example statistical data that is published, may be stored and processed outside of the UK. Some of our processors may process patient data outside of the UK. If they do, we will always ensure that the transfer outside of the UK complies with data protection laws.

## **Where do we store your information electronically?**

All the personal data we process is processed by our staff in the UK however for the purposes of IT hosting and maintenance this information may be located on servers within the European Union.

No 3rd parties have access to your personal data unless the law allows them to do so and appropriate safeguards have been put in place such as a Data Processor as above). We have a Data Protection regime in place to oversee the effective and secure processing of your personal and or special category (sensitive, confidential) data.

## **Who are our partner organisations?**

We may also have to share your information, subject to strict agreements on how it will be used, with the following organisations;

- NHS Trusts / Foundation Trusts
- GP's
- Primary Care Network
- NHS Commissioning Support Units
- Independent Contractors such as dentists, opticians, pharmacists
- Private Sector Providers
- Voluntary Sector Providers
- Ambulance Trusts
- Integrated Care Boards
- Social Care Services
- NHS England (NHSE) and NHS Digital (NHSD)
- Multi Agency Safeguarding Hub (MASH)
- Local Authorities
- Education Services
- Fire and Rescue Services
- Police & Judicial Services
- Voluntary Sector Providers
- Private Sector Providers
- Other 'data processors' which you will be informed of

You will be informed who your data will be shared with and in some cases asked for consent for this to happen when this is required.

## **Computer System**

This practice operates a Clinical Computer System on which NHS Staff record information securely. This information can then be shared with other clinicians so that everyone caring for you is fully informed about your medical history, including allergies and medication.

To provide around the clock safe care, unless you have asked us not to, we will make information available to our Partner Organisation (above). Wherever possible, their staff will ask your consent before your information is viewed.

### **Shared Care Records**

To support your care and improve the sharing of relevant information to our partner organisations (as above) when they are involved in looking after you, we will share information to other systems. You can opt out of this sharing of your records with our partners at anytime if this sharing is based on your consent.

We may also use external companies to process personal information, such as for archiving purposes. These companies are bound by contractual agreements to ensure information is kept confidential and secure. All employees and sub-contractors engaged by our practice are asked to sign a confidentiality agreement. If a sub-contractor acts as a data processor for [Practice Name] an appropriate contract (art 24-28) will be established for the processing of your information.

### **Sharing your information without consent**

We will normally ask you for your consent, but there are times when we may be required by law to share your information without your consent, for example:

- where there is a serious risk of harm or abuse to you or other people;
- Safeguarding matters and investigations
- where a serious crime, such as assault, is being investigated or where it could be prevented;
- notification of new births;
- where we encounter infectious diseases that may endanger the safety of others, such as meningitis or measles (but not HIV/AIDS);
- where a formal court order has been issued;
- where there is a legal requirement, for example if you had committed a Road Traffic Offence.

### **How long will we store your information?**

We are required under UK law to keep your information and data for the full retention periods as specified by the NHS Records management code of practice for health and social care and national archives requirements.

More information on records retention can be found online at:-

<https://transform.england.nhs.uk/information-governance/guidance/records-management-code/>

### **How can you access, amend move the personal data that you have given to us?**

Even if we already hold your personal data, you still have various rights in relation to it. To get in touch about these, please contact us. We will seek to deal with your request without undue delay, and in any event in accordance with the requirements of any applicable laws.

Please note that we may keep a record of your communications to help us resolve any issues which you raise.

**Right to object:** If we are using your data and you do not agree, you have the right to object. We will respond to your request within one month (although we may be allowed to extend this period in certain cases). This is NOT an absolute right sometimes we will need to process your data even if you object.

**Right to withdraw consent:** Where we have obtained your consent to process your personal data for certain activities (for example for a research project, or consent to send you information about us or matters you may be interested in), you may withdraw your consent at any time.

**Right to erasure:** In certain situations (for example, where we have processed your data unlawfully), you have the right to request us to "erase" your personal data. We will respond to your request within one month (although we may be allowed to extend this period in certain cases) and will only disagree with you if certain limited conditions apply. If we do agree to your request, we will delete your data but will need to keep a note of your name/ other basic details on our register of individuals who would prefer not to be contacted. This enables us to avoid contacting you in the future where your data are collected in unconnected circumstances. If you would prefer us not to do this, you are free to say so.

**Right of data portability:** If you wish, you have the right to transfer your data from us to another data controller. We will help with this with a GP to GP data transfer and transfer of your hard copy notes.

### **Primary Care Network**

The objective of primary care networks (PCNs) is for group practices together to create more collaborative workforces which ease the pressure of GP's, leaving them better able to focus on patient care.

This practice is a member of Derby City South PCN. Other members of the network are:

Alvaston Medical Centre  
Aspiro Healthcare  
Willington Surgery  
Wellbrook Medical Centre  
Village Surgery

Primary Care Networks form a key building block of the NHS long-term plan. Bringing general practices together to work at scale has been a policy priority for some years for a range of reasons, including improving the ability of practices to recruit and retain staff; to manage financial and estates pressures; to provide a wider range of services to patients and to more easily integrate with the wider health and care system.

This means the practice may share your information with other practices within the PCN to provide you with your care and treatment.

### **Service Evaluation**

The PCN carries out service evaluations in order to improve the quality and accessibility of primary care services. This may be carried out in a number of ways including telephone surveys, online surveys and interviews.

The legal basis for contacting you to take part -

*Article 6, e) processing is necessary for the performance of a task carried out in the public interest or in the exercise of official authority vested in the controller;”*

*Article 9, (h) processing is necessary for the purposes of preventive or occupational medicine, for the assessment of the working capacity of the employee, medical diagnosis, the provision of health or social care or treatment or the management of health or social care systems*

To process the survey information, we collect from you we will only do so with your consent.

*Article 6(1)(a) - Consent of the data subject (you)*

*Article 9(2)(a) – Explicit consent of the data subject. (you)’*

## **Population Health Management**

Population Health Management (or PHM for short) is aimed at improving the health of an entire population. The PHM approach requires health care organisations to work together with communities and partner agencies, for example, GP practices, community service providers, hospitals and other health and social care providers. These organisations will share and combine information with each other in order to get a view of health and services for the population in a particular area. This information sharing is subject to robust security arrangements.

As part of this programme, personal data about your health care will have all identifiers removed (like your name or NHS Number) and replaced with a code which will be linked to information about care received in different health care settings. If we see that an individual might benefit from some additional care or support, we will send the information back to your GP or hospital provider and they will use the code to identify you and offer you relevant services.

As part of this programme your GP and other care providers will send the information they hold on their systems to the North of England Commissioning Support Unit (NECS). NECS are part of NHS England. More information can be found here <https://www.necsu.nhs.uk>

NECS will link all the information together. Your GP and other care providers will then review this information and make decisions about the whole population or particular patients that might need additional support. NECS work in partnership with a company called Optum to help them with this work. Both NECS and Optum are legally obliged to protect your information and maintain confidentiality in the same way that your GP or hospital provider is. More information about Optum can be found here [www.optum.co.uk](http://www.optum.co.uk).

Health and Social Care Providers are permitted by data protection law to use personal information where it is ‘necessary for medical purposes’. This includes caring for you directly as well as management of health services more generally.

The PHM project is time-limited to 22 weeks. Once the project has completed all de-identified, information processed by NECS / Optum will be securely destroyed. This will not affect any personal information held by your GP or other health or social care providers.

## **Access to your personal information**

Data Subject Access Requests (DSAR): You have a right under the Data Protection legislation to request access to view or to obtain copies of what information the surgery holds about you and to have it amended should it be inaccurate. To request this, you need to do the following:

- Your request should be made to the Practice. (For information from a hospital or other Trust/ NHS organisation you should write direct to them.
- There is no charge to have a copy of the information held about you
- We are required to provide you with information within one month
- You will need to give adequate information (for example full name, address, date of birth, NHS number and details of your request) so that your identity can be verified, and your records located information we hold about you at any time.

## **What should you do if your personal information changes?**

You should tell us so that we can update our records please contact the Practice Manager as soon as any of your details change, this is especially important for changes of address or contact details (such as your mobile phone number), the practice will from time to time ask you to confirm that the information we currently hold is accurate and up-to-date.

## **Online Access**

You may ask us if you wish to have online access to your medical record. However, there will be certain protocols that we have to follow to give you online access, including written consent and the production of documents that prove your identity.

Please note that when we give you online access, the responsibility is yours to make sure that you keep your information safe and secure if you do not wish any third party to gain access.

## **Third parties mentioned on your medical record**

Sometimes we record information about third parties mentioned by you to us during any consultation, or contained in letters we receive from other organisations. We are under an obligation to make sure we also protect that third party's rights as an individual and to ensure that references to them which may breach their rights to confidentiality, are removed before we send any information to any other party including yourself.

The NHS wants to give people better ways to see their personal health information online. We know that people want to be able to access their health records. It can help you see test results faster. It also lets you read and review notes from your appointments in your own time.

From 01/11/2022 we're now letting you see all the information within your health record automatically. If you are over 16 and have an online account, such as through the [NHS App](#), [NHS website](#), or another online primary care service, you will now be able to see all future notes and health records from your doctor (GP). Some people can already access this feature, this won't change for you.

This means that you will be able to see notes from your appointments, as well as test results and any letters that are saved on your records. This only applies to records from your doctor

(GP), not from hospitals or other specialists. You will only be able to see information from 01/02/2023. For most people, access will be automatic, and you won't need to do anything.

Your doctor (GP) may talk to you to discuss test results before you are able to see some of your information on the app. Your doctor (GP) may also talk to you before your full records access is given to make sure that having access is of benefit to you. There might be some sensitive information on your record, so you should talk to your doctor if you have any concerns.

These changes only apply to people with online accounts. If you do not want an online account, you can still access your health records by requesting this information through reception. The changes also only apply to personal information about you. If you are a carer and would like to see information about someone you care for, speak to reception staff.

The NHS App, website and other online services are all very secure, so no one is able to access your information except you. You'll need to make sure you protect your login details. Don't share your password with anyone as they will then have access to your personal information.

If you do not want to see your health record, or if you would like more information about these changes, please speak to your GP or reception staff.

### **Our website**

The only website this Privacy Notice applies to is the Surgery's website. If you use a link to any other website from the Surgery's website then you will need to read their respective Privacy Notice. We take no responsibility (legal or otherwise) for the content of other websites.

The Surgery's website uses cookies. For more information on which cookies we use and how we use them, please see our Cookies Policy.

### **CCTV recording**

CCTV is installed on our practice premises covering both the external area of the building and the internal area excluding consulting rooms. Images are held to improve the personal security of patients and staff whilst on the premises, and for the prevention and detection of crime. The images are recorded onto an integral hard drive of the equipment and are overwritten on a rolling basis. Viewing of these digital images is password protected and controlled by the Practice Manager.

### **Telephone system**

Our telephone system records all telephone calls. Recordings are retained for up to three months, and are used periodically for the purposes of seeking clarification where there is a dispute as to what was said and for staff training. Access to these recordings is restricted to named senior staff.

## About the NHS OpenSAFELY Data Analytics Service pilot

The NHS OpenSAFELY Data Analytics Service is a secure data analytics service managed by NHS England. It is available to approved users (such as academics, data analysts, data scientists and researchers) to help them to analyse patient data which is held by your GP practice and by NHS England, in a safe and secure way that protects your privacy.

This is a pilot service which builds upon the success of the NHS England OpenSAFELY COVID-19 Service, which was introduced to:

- help identify medical conditions and medications which affect the risk or impact of COVID-19 infection on individuals
- identify the risk factors associated with poor patient outcomes
- gather information to monitor and predict the demand on health services

The service uses a software platform called OpenSAFELY which is designed with the following privacy safeguards:

OpenSAFELY uses pseudonymised data, held by your GP practice and by NHS England. Pseudonymised data is where information which can uniquely identify you, such as your NHS number, is replaced with a unique marker (a random string of letters and numbers). Other information which can also uniquely identify you, such as your name, date of birth and address are also removed from the data and replaced with something more general, for example, your date of birth is replaced with your age and your postcode is replaced with a geographical region. More information about pseudonymisation and other techniques used to protect your privacy can be found on the Understanding Patient Data website.

The OpenSAFELY software does not move patient data outside of the secure IT environments they are held in. Instead, the software is implemented inside the data centres of the 2 largest GP IT system suppliers, TPP and Optum so that when approved users of OpenSAFELY run code to analyse the pseudonymised data, it never leaves your GP practice's IT system.

Approved users are given access to an off-line development environment, where they can build and develop their data analysis code using 'dummy' (pretend or fictional) data rather than real patient data. The code is tested before it is sent securely into the live data environment to be executed (run) against the real pseudonymised patient data held in your GP practice's IT system. This means that approved users never see any real patient data, cannot download any real patient data and can only see aggregate anonymous results or outputs (which do not identify you).

A record (a log) is kept of all user activity and code which has been executed on the OpenSAFELY software platform and is published.

The users of the service are approved by, or on behalf of, NHS England to carry out data analytic projects for purposes such as:

- clinical audit (a way to check if healthcare is being provided in line with care standards to help improve the quality of healthcare services)
- service evaluation (to assess how well a healthcare service is achieving its intended aims)
- health surveillance (to better understand the health of the population)

- research, such as to find new treatments, improve early diagnosis of disease and prevent ill-health
- to plan NHS services, develop and improve health and social care policy, and to commission NHS services
- public health purposes (to identify and monitor diseases that pose a risk to the health of population)

## **What data is processed**

The following personal data, which has been pseudonymised, is processed by the NHS OpenSAFELY Data Analytics Service:

Demographic information: such as your age, sex, gender, marital status, sexual orientation, area of residence, ethnicity, religion or beliefs.

Health information: such as your health conditions, medications, allergies, Body Mass Index (BMI), prior blood tests and other investigation results.

Lifestyle information: such as whether you are a smoker, non-smoker or ex-smoker.

## **Where your data is collected from**

The NHS OpenSAFELY Data Analytics Service uses:

- data held by your GP practice (if they use IT systems managed by TPP and Optum) which has been pseudonymised, and;
- other relevant data sets which NHS England has approved for use in the service and has pseudonymised before it is stored in the OpenSAFELY secure platform.

## **Who data will be shared with**

The service does not share any personal data with other organisations.

Approved users who are conducting approved data analytic projects on pseudonymised data within the service (such as academics, data analysts, data scientists and researchers) will only see aggregate anonymous results and outputs (which do not identify you). A summary of the projects which have been given approval are published.

## **Our data processors**

Under a Data Processing Agreement (contract), NHS England has instructed:

- the Phoenix Partnership (Leeds) Ltd (TPP) and Optum (formerly EMIS Group PLC) to host the service in their secure data centres and allow access to approved users
- the Bennett Institute for Applied Data Science (University of Oxford) to provide platform development functions and conduct analyses of the data held on the service

## **How long data is kept**

Your data will be kept for as long as is necessary to deliver and run the service in accordance with the NHS Records Management Code of Practice 2021, NHS England's Records Management Policy and the UK GDPR and the Data Protection Act 2018.

The aggregate anonymous results and outputs made available to approved users of the service will be kept in line with the above policies to check and validate the data analysis and for audit purposes.

### **Where we store the data**

The OpenSAFELY secure platform stores and processes data in the UK.

### **Our legal basis and role**

Data protection law requires NHS England to have a legal basis before we can process your personal data.

Our legal basis is:

Legal obligation - Article 6(1)(c) of UK GDPR. This is because the Secretary of State for Health and Social Care has issued us with a Direction to provide this service. This Direction is called the NHS OpenSAFELY Data Analytics Service Pilot Directions 2025.

We also need an additional legal basis in the UK GDPR and the Data Protection Act 2018 (DPA 2018) to process data which is extra sensitive. This is known as 'special categories of personal data'. Our legal basis to process this is:

Substantial public interest – Article 9(2)(g) of UK GDPR, plus Schedule 1, Part 2, Paragraph 6 'statutory etc. and government purposes' of DPA 2018, plus;

Health or social care – Article 9(2)(h) of UK GDPR, plus Schedule 1, Part 1, Paragraph 2 'Health or social care purposes' of DPA 2018.

NHS England's role under data protection law is a 'joint controller' with the Secretary of State for Health and Social Care. This means that we have jointly decided what personal data to collect and how it will be processed, to provide the NHS OpenSAFELY Data Analytics Service in accordance with the NHS OpenSAFELY Data Analytics Service Pilot Directions 2025.

### **Your rights over your data**

You can read more about the health and care information collected by NHS England, and your choices and rights on the following webpages:

NHS England's general privacy notice  
How we look after your health and care information  
How to make a subject access request

## **Opt-outs**

### **Type 1 opt-out**

Type 1 opt-outs are recorded in GP practice records. They represent patients' choice to opt out of their confidential patient information which is held by their GP practice from being used for purposes beyond their individual care (without their explicit consent). If you have registered a Type 1 opt-out with your GP practice, your choice will be respected, and your data will not be used by the NHS OpenSAFELY Data Analytics Service.

You can make register a Type 1 opt-out by completing a form and returning it to your GP practice. More information is available on the NHS website.

### **National Data Opt-Out**

The National Data Opt-Out allows patients to opt out of their confidential patient information being used for research or planning purposes. If you have registered a National Data Opt-Out, your data will still be processed by NHS OpenSAFELY Data Analytics Service, with certain exceptions\*. This is because the National Data Opt-Out does not apply where NHS England has a legal obligation to operate the service under the NHS OpenSAFELY Data Analytics Service Pilot Directions 2025. The National Data Opt-Out also does not apply to aggregate anonymous data (data which does not identify you) which is the only data shared with approved users of the OpenSAFELY service.

### **Data Protection Officer For NHSE Pilot**

We take our responsibility to look after your data very seriously. If you have any questions or concerns about how NHS England uses your data, please contact our Data Protection Officer at: [england.dpo@nhs.net](mailto:england.dpo@nhs.net).

You also have the right to make a complaint about how we are using your data to the Information Commissioner's Office by calling 0303 123 1113 or through the [ICO website](#).

### **Changes to this notice**

This privacy notice was first published on 22 July 2025. NHS England may make changes to this privacy notice. If so, the date it was last amended will be shown below. Changes to this notice will apply immediately from the date of any change.

### **Medical Examiner Service**

Following the death of any patients of [Practice Name] we are now obliged to inform [Provider Trust] NHS Trust, Medical Examiner Service.

Medical examiner offices at acute trusts now provide independent scrutiny of non-coronial deaths occurring in acute hospitals. The role of these offices is now being extended to also cover deaths occurring in the community.

Medical examiner offices are led by medical examiners, senior doctors from a range of specialties including general practice, who provide independent scrutiny of deaths not taken at the outset for coroner investigation. They put the bereaved at the centre of processes after the death of a patient, by giving families and next of kin an opportunity to ask questions

and raise concerns. Medical examiners carry out a proportionate review of medical records, and liaise with doctors completing the Medical Certificate of Cause of Death (MCCD).

The Practice will share any patient with the service upon request.

### **Objections / Complaints**

The Introduction of the Data Use and Access Act 2025 has created a new, mandatory statutory complaints-handling framework for GP Practices which takes effect on June 19<sup>th</sup>, 2026.

This gives individuals the right to complain directly to the practice and requires the practice to acknowledge complaints within 30 days and respond without undue delay.

Should you have any concerns about how your information is managed at the GP, please contact the

Practice at [ddicb.macmpcomplaints@nhs.net](mailto:ddicb.macmpcomplaints@nhs.net).

The practice has a specific Data Protection Complaints Policy which can be provided upon request.

If you are still unhappy following a review by the GP practice, you have a right to lodge a complaint with a supervisory authority: You have a right to complain to the UK supervisory Authority as below.

Information Commissioner:

Wycliffe house

Water Lane

Wilmslow

Cheshire

SK9 5AF

Tel: 01625 545745

<https://ico.org.uk/>

If you are happy for your data to be used for the purposes described in this privacy notice, then you do not need to do anything. If you have any concerns about how your data is shared, then please contact the Practice Data Protection Officer.

If you would like to know more about your rights in respect of the personal data we hold about you, please contact the Data Protection Officer as below.

**Data Protection Officer:**

The Practice Data Protection Officer is Paul Couldrey of PCIG Consulting Limited. Any queries regarding Data Protection issues should be addressed to him at: -

Email: [info@pcdc.org.uk](mailto:info@pcdc.org.uk)

Postal: PCIG Consulting Limited

7 Westacre Drive

Quarry Bank

Dudley

West Midlands

DY5 2EE

**Changes:**

It is important to point out that we may amend this Privacy Notice from time to time. If you are dissatisfied with any aspect of our Privacy Notice, please contact the Practice Data Protection Officer.

**Changes:**

It is important to point out that we may amend this Privacy Notice from time to time. If you are dissatisfied with any aspect of our Privacy Notice, please contact the Practice Data Protection Officer.